

CERTIFICATE OF LOCATION OF GOVERNMENT CORNER

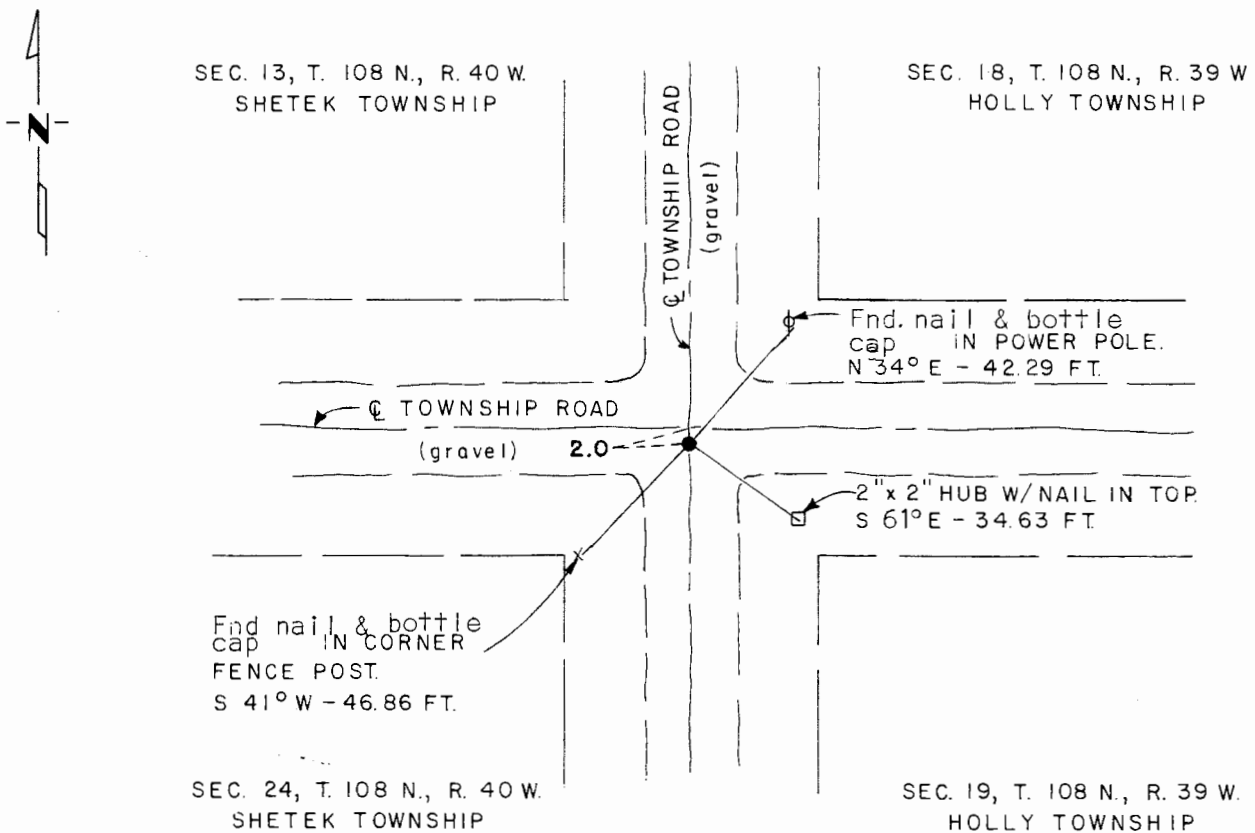
Northeast Corner of Section 24, Township 108 N., Range 40 W., _____ P.M.

STATE OF MINNESOTA, County of Murray

At the corner location shown on the sketch:

- On Sept. 25, 1980 found a 1/2" iron reinforcing bar in center line of north-south road & 2.0' south of east-west center line of road per Co. record witness ties.
DATE
 - left monument as found, lowered monument, removed monument (explain)
- On _____ placed a _____
DATE

SKETCH OF REFERENCE TIES



I hereby certify that this document and the data contained herein was prepared by me or under my direct supervision.

[Signature] 12/28/81
SIGNATURE DATE

Registration No. 12967

- Land Surveyor, Professional Engineer
- County Surveyor, County Engineer

OFFICE OF THE COUNTY RECORDER
 County of Murray

I hereby certify that this document was filed in the Co. Recorders office at 10 A.M. on the 18th day of February A.D., 1982

County Recorder William W. Ohme

By _____, Deputy

DOCUMENT NO. _____